

HIDDEN GEMS IN THE HEART OF ITALY

IL GIARDINO SEGRETO

GARDEN
TOURS




**Il Giardino
Segreto**
GARDEN TOURS

ASCOLI PICENO AND CAFFE' MELETTI

Indulge in guided visit of Ascoli Piceno which boasts a wonderful historic centre built entirely of travertine rock which is extracted from nearby quarries. Its centrepiece is the Renaissance-era Piazza del Popolo, where the Palazzo dei Capitani and the church of San Francesco stand. The city owes its fame to its special geographical position: it combines sea and mountains, history and nature in one unique setting.

At the end of the visit, there will be a stop at the historic Caffè Meletti.

You will have a typical meal and wine tasting with a special finale dedicated to “Anisetta Meletti”, a typical Marche digestif. The Meletti family still preserves the original recipe and guarantees that the traditions of one of the oldest liquor companies are respected.





ASCOLI PICENO

ASCOLI PICENO IS THE PLACE WHERE HISTORY, ART AND FOOD PASSION LIVE TOGETHER AND TELL HOW BEAUTIFUL ITALY CAN BE.

ASCOLI PICENO PRESERVES THE INCOMPARABLE CHARME OF THE OLD TOWNS OF CENTRAL ITALY WHERE TIME SEEMS TO HAVE STOPPED. OLD BUILDINGS IN TRAVERTINE, ELEGANT SQUARES, HISTORIC CHURCHES RICH IN TREASURES AND SUGGESTIVE TOWERS UNDERLINE ITS STYLE.



THE HISTORIC CAFFÈ MELETTI HAS BEEN DECLARED "PREMISES OF HISTORICAL AND ARTISTIC INTEREST" BY THE MINISTRY OF CULTURAL AND ENVIRONMENTAL HERITAGE. AFTER A BRIEF CLOSURE, A LOCAL FOUNDATION HAS REOPENED THE CAFÉ BRINGING THIS SPECIAL PLACE BACK TO ITS FORMER PRESTIGE AND CHARME.

A TASTE OF AUTHENTIC ITALY: OFFIDA & VILLA CICCHI EXPERIENCE

Transfer to **Offida**, an ancient village listed among the most beautiful villages in Italy. It is known for the laborious and patient art of delicate bobbin lace-making, an ancient tradition to which a museum is dedicated. Walking through the streets of the medieval centre, one can hear a rhythmic and continuous crackling, a sort of music produced by invisible instruments; these are the many bobbins that the nimble hands of Offidani women move with constancy and skill, for the production of bobbin lace, of which Offida has been one of the most important centres for centuries.

Transfer to **Villa Cicchi**. On the hill overlooking Ascoli, perched on a travertine spur, stands this mansion, built in the late 1600s. Purchased by the Cicchi family in 1917, it is now managed by their heir Maria Elena, who has developed a hospitality, catering and events business with her passion and vision for the future. Maria Elena herself will lead a cooking class dedicated to the famous fritto misto all'ascolana, taking guests on a discovery of the typical dish par excellence of Ascoli cuisine, through the preparation and stuffing of the famous local olives and the traditional and unique recipe for mixed meat stuffing, the basis of typical Piceno cuisine. Following the class, visitors will have lunch inside the Villa.



OFFIDA



OFFIDA, AN ANCIENT VILLAGE ENCLOSED BY 15TH-CENTURY CASTLE WALLS, IS AMONG THE MOST BEAUTIFUL VILLAGES IN ITALY. PERCHED ON A ROCKY SPUR BETWEEN THE VALLEYS OF TESINO AND TRONTO, IT IS KNOWN FOR THE LABORIOUS AND PATIENT ART OF BOBBIN LACE, AN ANCIENT TRADITION TO WHICH IS DEDICATED A MUSEUM AND A MONUMENT BUILT IN THE OLD TOWN. BOBBIN LACE MAKING IS STILL WIDESPREAD: WHEN YOU WALK THROUGH THE SUGGESTIVE STREETS OF THE HISTORIC CENTRE, YOU SEE WOMEN INTENT ON LACE-MAKING.

VILLA CICCHI



ON THE HILL OVERLOOKING ASCOLI, PERCHED ON A TRAVERTINE SPUR, STANDS THIS MANSION, BUILT IN THE LATE 1600S. PURCHASED BY THE CICCHI FAMILY IN 1917, IT IS NOW MANAGED BY THEIR HEIR MARIA ELENA, WHO HAS DEVELOPED A HOSPITALITY, CATERING AND EVENTS BUSINESS WITH HER PASSION AND VISION FOR THE FUTURE.



SECRET GARDENS IN THE SOUTH OF MARCHE

Departure to Grottammare to reach **Villa Sgariglia**, a classic example of an eighteenth-century villa of Marche, surrounded by an extraordinary esoteric garden of the same era. The villa's park is structured as a green theatre on multiple terraces with an irregular configuration and is one of the few remaining examples of the typical 18th-century tradition of the Marche region. Built on terraces which took the orography of the site into account, the garden is hidden from prying eyes by the buildings which surround it (the main building, the chapel and the stables). This creates a microclimate that is ideal for the cultivation of precious and ancient plants such as cedars, lemons, bergamots, mandarins, bitter oranges and roses.

Afterwards the group will be transferred to Castel di Lama for a visit to the gardens of the **Seghetti Panichi Historic Village**. The Bioenergetic Historical Park, the first in Europe, is a romantic landscaped garden; a place full of charm and atmosphere. This is a secret and intimate place where nature explodes in every season, creating an extraordinary scene at any time of year. Designed by the well-known botanist Ludwig Winter in 1870, the Borgo Seghetti Panichi Historical Park brings together a great variety of botanical species from all over the world, creating a true ecological habitat.

This naturalistic ensemble offers an unparalleled wealth of landscape, and is characterised by its silent, still and intimate atmosphere.

The lunch will take place in a selected area of this charming scenario.

VILLA SGARIGLIA

GROTTAMMARE (AP)



A CLASSIC EXAMPLE OF AN 18TH-CENTURY MARCHE VILLA WHICH BOASTS AN EXTRAORDINARY ESOTERIC GARDEN BUILT IN THE SAME PERIOD. THE ENTIRE COMPLEX WAS DESIGNED BY ARCHITECT GIOSFATTI, WHO ADDED AN ITALIAN GARDEN WITH TERRACES AND CITRUS ARBORS BUILT IN THE 1700S.

BORGO STORICO SEGHETTI PANICHI

CASTEL DI LAMA (AP)

KNOWN AS THE BIOENERGETIC HISTORICAL PARK, IS A GARDEN WITH A ROMANTIC LANDSCAPING LAYOUT. IT'S A PLACE FULL OF CHARM AND ATMOSPHERE WHERE NATURE EXPLODES IN EVERY SEASON, PROVIDING AN EXTRAORDINARY IMPACT.

DESIGNED BY THE RENOWNED BOTANIST LUDWIG WINTER IN 1870, THE HISTORICAL PARK OF BORGO SEGHETTI PANICHI BOASTS A WIDE VARIETY OF BOTANICAL SPECIES FROM AROUND THE WORLD, CREATING A REAL ECOLOGICAL HABITAT: PALM TREES, CITRUS ORCHARDS, ROSE GARDENS AND MANY MORE.

THE PARK ALSO FEATURES SECRET GROTTOS AND WIDE SPACES FOR RELAXING. BORGO SEGHETTI PANICHI IS A NATURALISTIC ENSEMBLE THAT OFFERS UNPARALLELED LANDSCAPE RICHNESS CHARACTERIZED BY AN ATMOSPHERE FULL OF SILENCE, PEACE, AND INTIMACY.



THE TREASURES OF BOLSENA LAKE

Tour of the lake by private boat and landing on the **Bisentina island**, set in the natural amphitheater of Lake Bolsena, which the Englishwriter John Evelyn called "a most incomparable prospect." Situated in the center of Lake Bolsena, this island is a naturalistic oasis that holds a cultural heritage in the interweaving of history, ancient architecture, sacred art and mysteries.

Afterwards, a guided tour of the suggestive Renaissance **Palace Palazzo del Drago** will take place with a final wine tasting offered on the suggestive terrace.



ISOLA BISENTINA

BOLSENA (VT)



ISOLA BISENTINA RISES FROM THE CLEAR WATERS OF LAKE BOLSENA, ONE OF THE LARGEST VOLCANIC LAKES IN THE WORLD. THIS ISLAND IS A LUXURIANT OASIS, A TEMPLE OF NATURE AND ART. A PLACE OF CONTEMPLATION WHOSE HISTORY IS LOST IN CENTURIES.

THE ISLAND MUST BE CONSIDERED AS A UNIQUE WORK OF ART, CREATED ACCORDING TO A MYSTICAL AND ARTISTIC PROJECT BORN IN THE RENAISSANCE BY THE WILL OF POPE PIUS II AND THE POWERFUL FARNESE FAMILY. SEVEN CHAPELS AND A LARGE CHURCH WERE BUILT DURING THE CENTURIES.

BISHOPS, DUKES, PRINCES, BUSINESSMEN, WRITERS, POETS AND SO MANY IMPORTANT FIGURES WHO LOVED IT HAVE BEEN LIVING ON THE ISLAND, LEAVING BEHIND THEM SUGGESTIVE FRAGMENTS OF A PAST FULL OF CHARM.

PALAZZO DEL PRINCIPE DEL DRAGO

BOLSENA (VT)



AN ELEGANT RENAISSANCE BUILDING OWNED BY THE PRINCE OF THE DRAGON. INTERESTING FOR THE OF ITS ARCHITECTURAL PECULIARITIES AND FOR A CYCLE OF FRESCOES DATING BACK THE RENAISSANCE PERIOD . NOTEWORTHY IS THE SUSPENDED GARDEN WITH NUMEROUS LEMON TREES IN POTS AND THE BEAUTIFUL VIEW OF LAKE BOLSENA.

EXCLUSIVITY AND CHARME IN THE TIBER VALLEY

Departure towards Vaiano and stop to **Villa Tirrena**, an extraordinary estate set in a dreamy landscape boasting a contemporary art park, terraced gardens and a beautiful villa. Not to miss the incredible cellars and their suggestive atmosphere. A wine tasting with appetizers is included in the visit.

Afterwards, time for a visit to **Civita di Bagnoregio**, well known as the dying city: a destination of extraordinary beauty overlooking a unique landscape: the Badlands of the Tiber Valley.



VILLA TIRRENA

VAIANO (VT)



LOCATED IN A MAGICAL ENVIRONMENT, WITH BREATHTAKING VIEWS OF THE VALLEY OF THE BADLANDS, VILLA TIRRENA IS A PERFECT COMBINATION OF A COUNTRY ESTATE AND A REFINED RESIDENCE. THIRTY-ONE HECTARES OF VINEYARDS, AN EXCLUSIVE PRIVATE SCULPTURE GARDEN, AND A 13TH-CENTURY TOWER COMPLETE THE DOMAINE. IMMERSED BETWEEN UMBRIA AND UPPER LAZIO, THE ICONIC ENVIRONMENT OFFERS PANORAMAS THAT EXTEND ALONG THE VALLEY OF THE BADLANDS. A MEMORABLE SCENARIO WHERE NATURE, ART, AND LOVE FOR BEAUTY WALK HAND IN HAND. IT IS DIFFICULT TO CONVEY IN WORDS THE MAGIC OF SUMPTUOUS CELLARS, PERSIAN CARPETS, CANDELABRA, SUBDUED MUSIC, INTIMATE SPACES FOR READING, AND LEARNING ABOUT THE HISTORY OF THE D'AMICO FAMILY. IN THIS UNIQUE CONTEXT, WE WILL SIP THE ENVELOPING WINES OF THE ESTATE

CIVITA DI BAGNOREGIO

BAGNOREGIO (VT)

CIVITA DI BAGNOREGIO IS A ONE-OF-A-KIND, STUNNING HILLTOP VILLAGE IN CENTRAL ITALY.

PERCHED ON THE TOP OF A STEEP, CRUMBLING ROCK FORMATION IN THE CALANCHI VALLEY, BETWEEN ROME AND ORVIETO, CIVITA IS ISOLATED FROM THE SURROUNDING VILLAGES AND CAN ONLY BE REACHED VIA A LONG BRIDGE CONNECTING IT WITH BAGNOREGIO, ITS NEIGHBORING TOWN.

THE ROCK THAT SUPPORTS THE TOWN IS SUBJECT TO INTENSE EROSION DUE TO WIND AND WATER AND THIS CONDEMNS THE CITY TO A SLOW YET SEEMINGLY INEVITABLE COLLAPSE.

OVER TIME, THE INHABITANTS OF CIVITA LEFT AND RELOCATED TO MORE SOLID GROUNDS AND NOW THE TOWN ONLY COUNTS 11 INHABITANTS.

THIS PECULIAR STORY MAKES CIVITA DI BAGNOREGIO UNIQUE AND IS WHAT GAINED THE VILLAGE THE NICKNAME OF 'ITALY'S DYING TOWN'.

DESPITE THIS WORRYING PREMISE, CIVITA DI BAGNOREGIO IS A WONDERFUL PLACE TO VISIT AND DOES NOT FEEL LIKE A DYING PLACE AT ALL



THE DISCREET CHARM OF VITERBO

Transfer to the small town of Bagnaia where is located **Villa Lante**, famous for its beautiful mannerist gardens and incredible fountains, statues and water features.

At the end of the visit, transfer to a selected Home restaurant for lunch. In the afternoon, transfer to Viterbo which boasts an astonishing historic centre. Cobble streets, little alleys, quaint squares and picturesque stone buildings await visitors in the largest and best preserved Medieval city centre in Europe.

I



VILLA LANTE

BAGNAIA (VT)



THE SPLENDID ITALIAN GARDEN REPRESENTS THE CENTRAL ELEMENT COMPARED TO THE TWIN BUILDINGS, DISCREET PRESENCES PERFECTLY INTEGRATED INTO THE GREENERY. THE IDEAL CENTER OF THE STRUCTURE DESIGNED BY VIGNOLA IS THE MONUMENTAL FOUNTAIN OF THE FOUR MOORS. THE MANY OTHER FOUNTAINS, THE SCENE OF INGENUOUS WATER GAMES, ARE LOCATED ON THE HILL ABOVE.

VITERBO

PIANOSCARANO AND SAN PELLEGRINO, THE TWO MOST AUTHENTIC QUARTERS IN VITERBO. WHILE WALKING DOWN THEIR STREETS, YOU CAN STILL IMAGINE THE ANCIENT ACTIVITY OF THE WORKSHOPS WHERE ARTISANS WORKED EVERY DAY WITH THEIR APPRENTICES TO MAKE TOOLS AND EVERYTHING ELSE USEFUL FOR DAILY LIFE. WE WILL IMMERSE OURSELVES IN THIS ATMOSPHERE OF BYGONE TIMES JEALOUSLY GUARDED IN THE CASNET OF THE MEDIEVAL QUARTER, WE WILL DISCOVER THE ANCIENT OIL MILL WITH THE SMALL MUSEUM HOUSED IN A COLLECTED CAVE DUG INTO THE TUFA. HERE WE WILL TASTE OF THE INCOMPARABLE LOCAL OLIVE OIL.

D



BEAUTY, INSPIRING NATURE AND RELAX IN TUSCIA

Departure for Caprarola. Guided tour of **Palazzo Farnese**, a must-see for those who love history, art and architecture. Built in the 16th century, it represents the prestige and power of the Farnese family, one the most powerful families during the Italian Renaissance and Baroque. Its interiors are finely decorated with remarkable frescos while its sumptuous gardens are of incomparable beauty.

At the end of the visit, transfer to Ronciglione for the guided tour of the private **Villa Lina**, 40 hectares of organic estate, a Mediterranean paradise, curated by writer and filmmaker Paola Igliori. The lunch will take place in the splendid set of the Villa.

At the end of the meal, transfer to the Hotel Salus Terme. Time to relax in the luxurious spa of the hotel. In the evening, dinner and overnight stay.





PALAZZO FARNESE

CAPRAROLA (VT)

CAPRAROLA'S PALAZZO FARNESE, ALSO KNOWN AS VILLA FARNESE, IS THE TOWN'S MAIN ATTRACTION. BUILT IN THE 16TH CENTURY, IT REPRESENTS THE PRESTIGE AND POWER OF THE FARNESE FAMILY, ONE OF THE MOST POWERFUL FAMILIES DURING THE ITALIAN RENAISSANCE AND BAROQUE.

ITS ARCHITECTURE HAS A UNIQUE PENTAGONAL SHAPE WITH A CIRCULAR COURTYARD IN THE CENTER. INSIDE IT IS DECORATED WITH IMPORTANT FRESCOES, SUCH AS THOSE IN THE SALA DEI FASTI FARNESIANI AND THE SALA DEL MAPPAMONDO. THERE ARE ALSO REMARKABLE RENAISSANCE GARDENS WITH FOUNTAINS, SCULPTURES AND TERRACES.

PALAZZO FARNESE IS A MUST-SEE FOR THOSE WHO LOVE HISTORY, ART AND ARCHITECTURE.



VILLA LINA

RONCIGLIONE (VT)

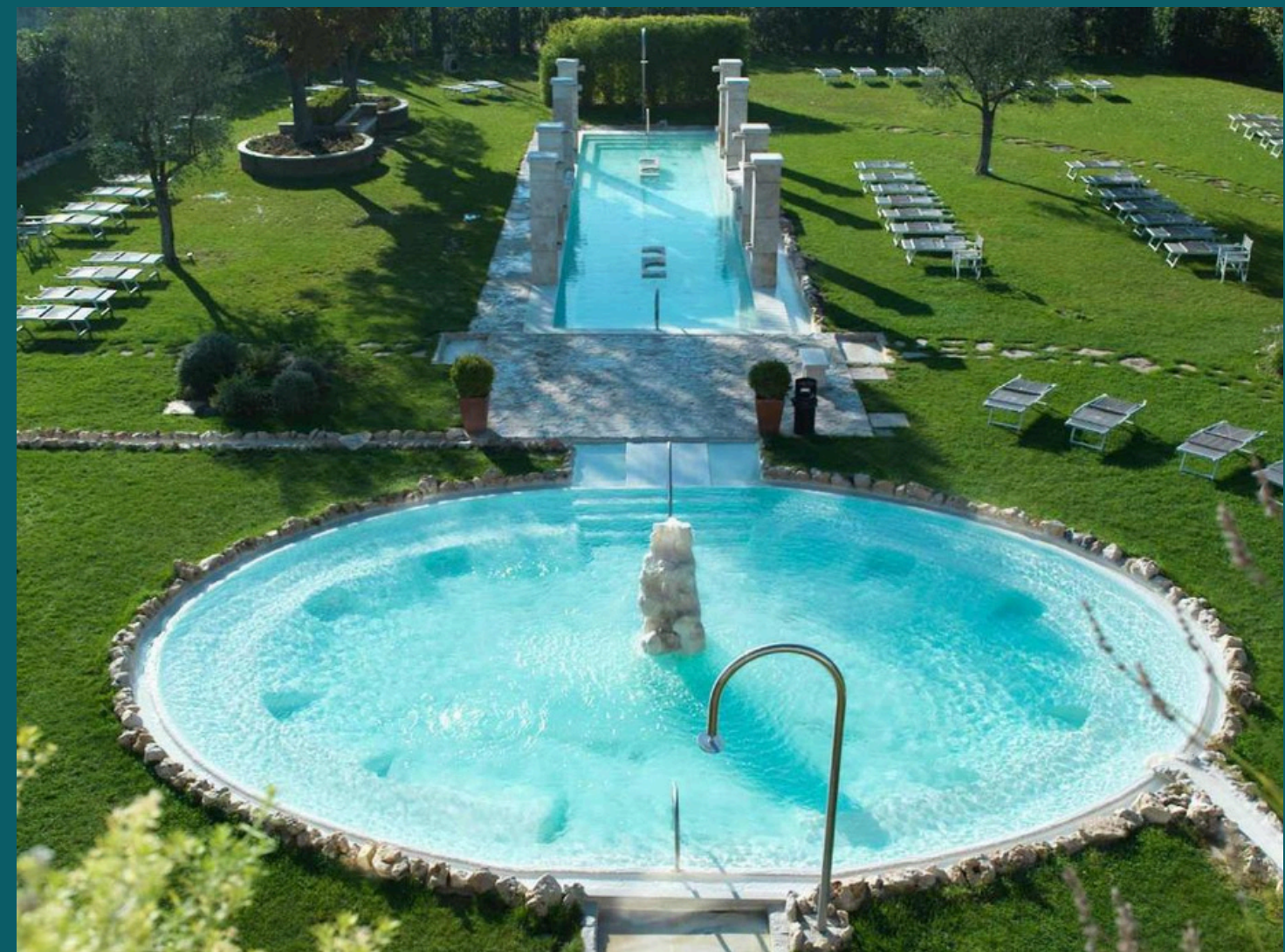
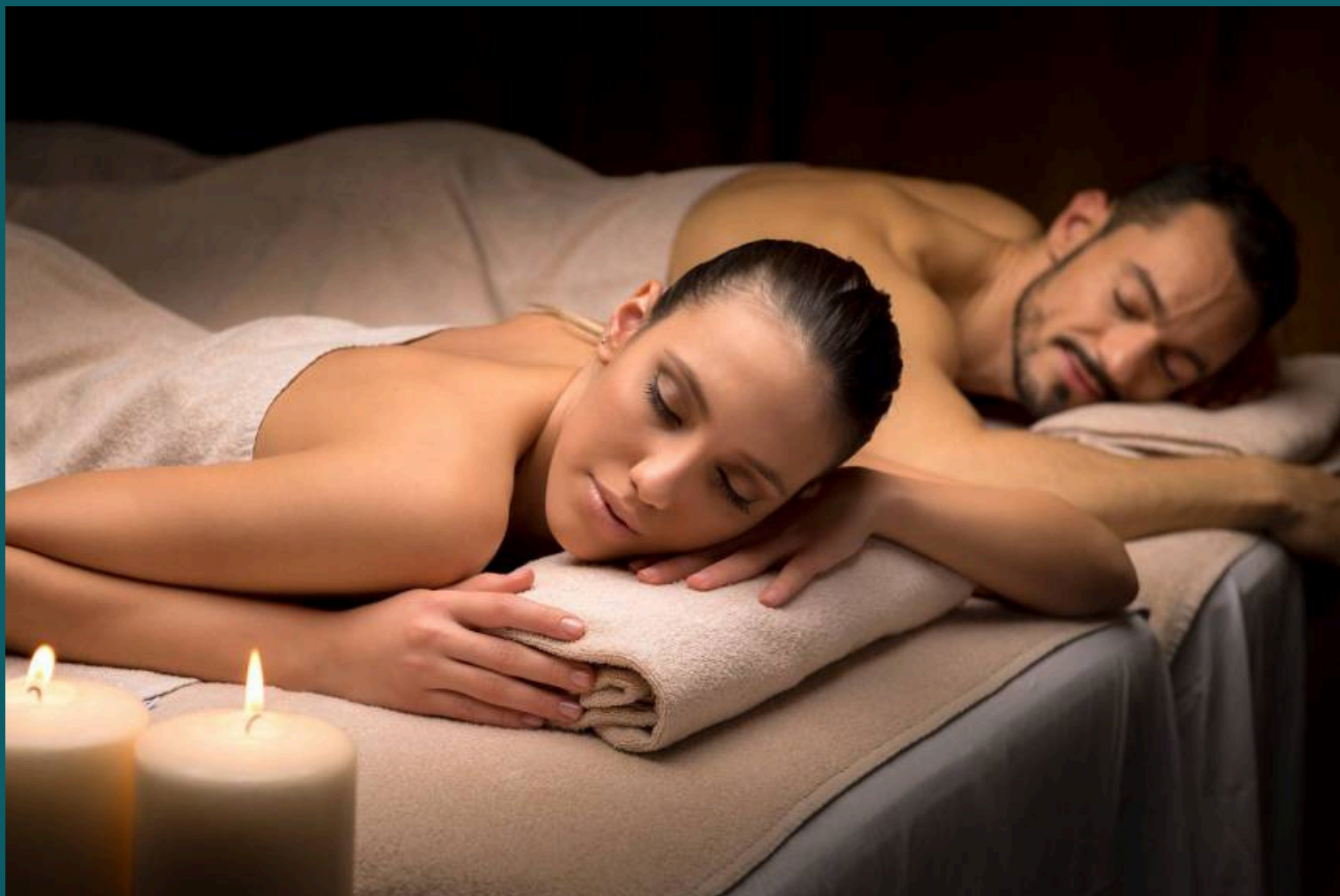
DEFINED BY THE FINANCIAL TIMES AS "ITALY'S BEST-KEPT SECRET," 40 HECTARES OF AN ORGANIC ESTATE, A MEDITERRANEAN PARADISE, CURATED BY WRITER AND FILMMAKER PAOLA IGLIORI.

AN AUTHENTIC HISTORICAL RESIDENCE IN EVERY DETAIL, WHERE ARTISTS LIKE SANDRO CHIA, CY TWOMBLY, AND JEAN MICHEL BASQUIAT, AND POETS LIKE GREGORY CORSO AND D'ANNUNZIO HAVE STAYED. ENCLOSED BY THE SUGGESTIVE BOTANICAL GARDEN IN THE LATE 1700S AND THE ITALIAN GARDEN.

HOTEL TERME SALUS

VITERBO

THE ESTABLISHMENT OF THE TERME SALUS IS A MODERN BUILDING LOCATED IN A QUIET AREA OF VITERBO. IT'S AN IMPRESSIVE COMPLEX WITH OVER EIGHTY ROOMS, BUILT WITHIN AN EXTENSIVE PRIVATE PARK, WITH PINE TREES AND GREEN SPACES. THE WELLNESS CENTRE IS PROVIDED WITH A GYM AREA, SENSORY SHOWERS, AN INDOOR/OUTDOOR THERMAL POOL WITH HYDROMASSAGE. VARIOUS TYPES OF MASSAGES AND RELAXING OR BEAUTY TREATMENTS ARE ALSO AVAILABLE, AS WELL AS NATURAL MUD BATHS.



A DREAMY AND DAINTY DAY IN THE EARTH OF LAZIO

Departure for **Vignanello** and visit to **Castello Ruspoli**, a medieval castle home to one of the most important and well-preserved Renaissance Gardens in Europe.

Following this, transfer to **Canepina** for a visit to a small family-run pasta factory. There will be a demonstration concerning the processing of different types of pasta and the local raw materials used in production (hazelnuts, hemp, Senator Cappelli wheat, chestnuts, etc.).

At the end of the visit, lunch in a traditional trattoria.

In the afternoon transfer to **Bomarzo** for a visit to the famous **Parco dei Mostri**, also known as the Sacred Wood: it's an impressive Renaissance park featuring extraordinary stone sculptures depicting fantastic creatures related to ancient myths and legends.

At the end of the visit a dinner will take place in the exclusive context of the park.

After dinner back to Viterbo for overnight stay at the hotel.



CASTELLO RUSPOLI

VIGNANELLO (VT)



A FORTRESS THAT PRESERVES THE HISTORY OF THE RUSPOLI FAMILY OVER TIME. THANKS TO THE RESTORATION AND CONSERVATION MEASURES PROMOTED BY THE FAMILY, THE CASTLE IS NOW KNOWN WORLDWIDE, ESPECIALLY IN EUROPE, AS THE SEAT OF ONE OF THE MOST EXCLUSIVE GARDENS OF THE RENAISSANCE PERIOD.

HOMEMADE PASTA WORKSHOP IN CANEPINA (VT)

TO UNDERSTAND THE QUALITY OF RAW MATERIALS AND PRODUCTS, THE PASTA MAKER GUIDO WILL GUIDE US THROUGH THE TASTING OF PASTA VARIETIES AND THE ANALYSIS OF ORGANOLEPTIC QUALITIES. FOLLOWING THIS, A WORKSHOP ON THE PRODUCTION OF “FIENO CANEPINESE”, WHICH PARTICIPANTS CAN TAKE WITH THEM AS A SOUVENIR OF THE EXPERIENCE, ALONG WITH A CHOICE OF PASTA PACKAGE.



SACRO BOSCO

BOMARZO (VT)



THIS SACRED WOOD, ALSO KNOWN AS “PARCO DEI MOSTRI” (PARK OF THE MONSTERS”), IS A MONUMENTAL AREA ON THE SLOPES OF A NATURAL AMPHITHEATER, IN THE PROVINCE OF VITERBO. IT WAS DESIGNED IN 1552, AT THE BEHEST OF PRINCE PIER FRANCESCO ORSINI WHO TASKED ARCHITECT PIRRO LIGORIO WITH THE CREATION OF A LABYRINTH OF SYMBOLS IN THE ESTATE OF BOMARZO.

HE WANTED TO GET HIMSELF LOST WANDERING AMONG GIGANTIC STATUES CARVED IN STONES, REPRESENTING MONSTROUS CREATURES.

THE ITALIAN GARDENS IN THE WOOD ARE BUILT WITH A GEOMETRIC AND PROSPECTIVE BASIS, WITH ORNAMENTS LIKE LARGE TERRACES, FOUNTAINS, AND MANNERIST SCULPTURES.

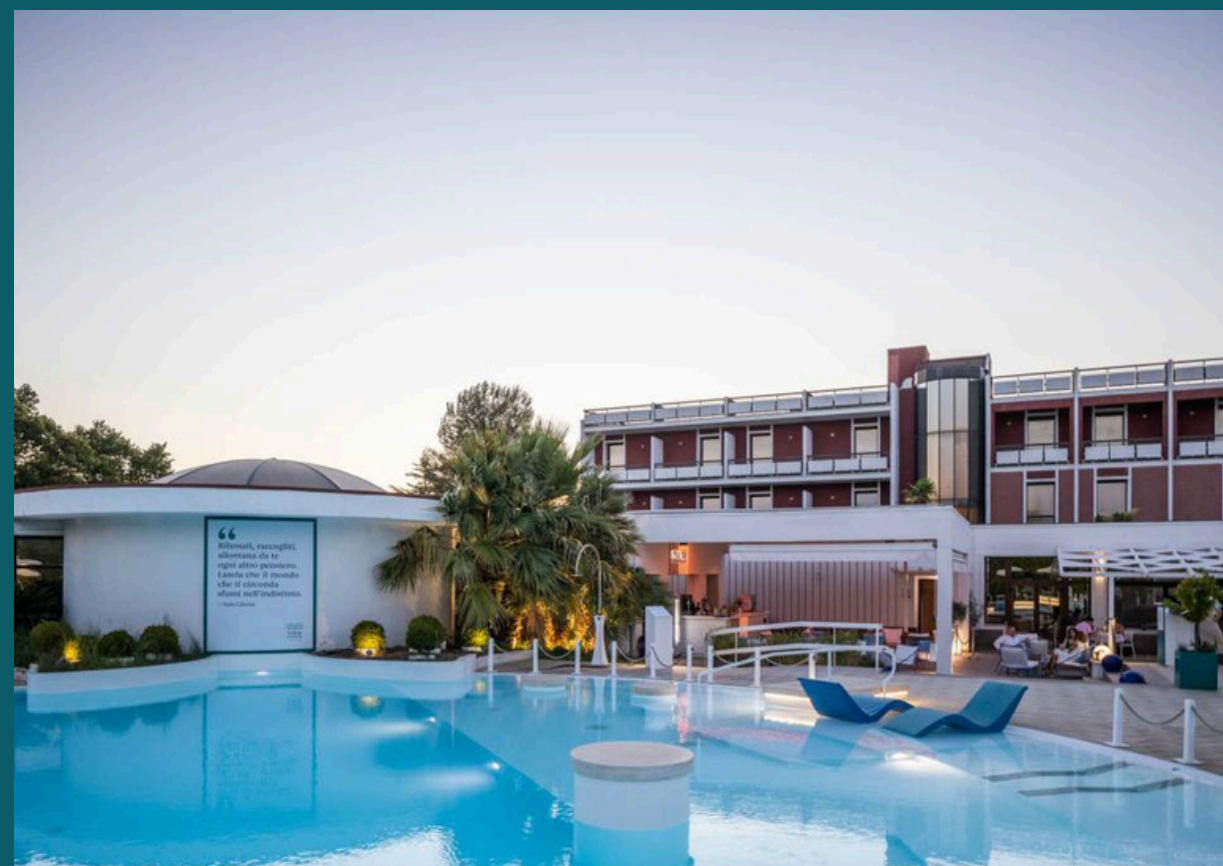
IN THE PARK THERE ARE FIGURES OF MONSTERS, DRAGONS, MYTHOLOGICAL SUBJECTS, AND EXOTIC ANIMALS PROTRUDING FROM THE GROUND; THERE’S ALSO A LEANING HOUSE, A FUNERAL TEMPLE, FOUNTAINS, SEATS, AND OBELISKS ENGRAVED WITH VARIOUS MOTTOS AND INSCRIPTIONS.

HOTELS

Hotel Villa Picena Colli del Tronto
<https://www.villapicena.it/>



Hotel Salus Terme Viterbo
<https://www.hotelsalusterme.it/>



Ludwig Boutique Hotel & Spa Bolsena
<https://www.ludwigboutiquehotel.com/>

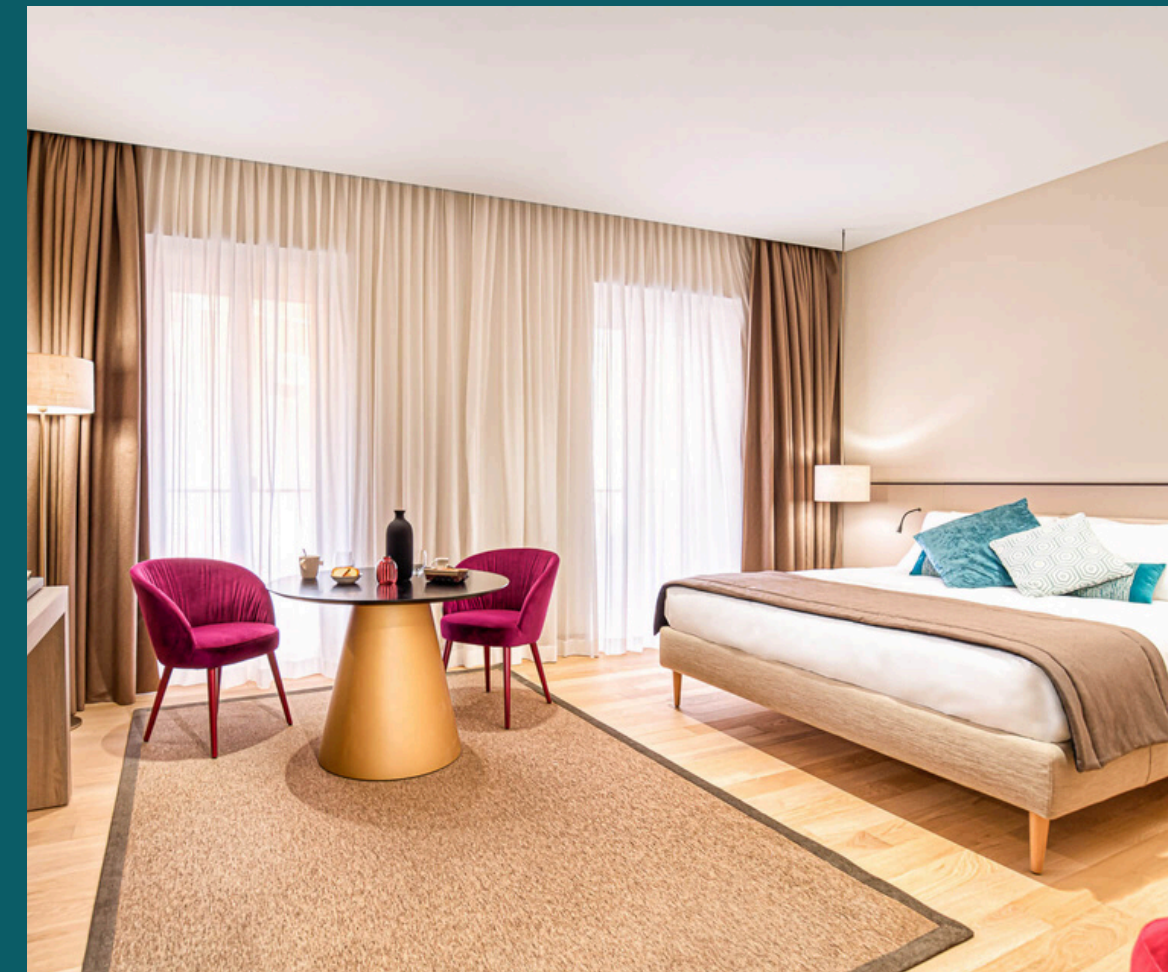


This tour can be rearranged for families and small groups from a minimum of 6 people. In those cases, overnight accommodation is available at:

Borgo Seghetti Panichi (Ascoli Piceno)
<https://seghettipanichi.it/>



Palazzo Ubertini (Viterbo)
<https://www.palazzoubertini.eu/>



Palazzo dei Mercanti

<https://www.palazzodeimercanti.it/>



IL GIARDINO SEGRETO

GARDEN
TOURS




**Il Giardino
Segreto**
GARDEN TOURS

web site: www.italiangardentour.com

mail: maria@promotuscia.it

mobile phone: +39 348 52 03 954